

salina

**CONCRETE
PRODUCTS, INC.**

1100 WEST ASH ST.
SALINA, KANSAS 67401
(SINCE 1913)

CONSTRUCTION MATERIALS AND ACCESSORIES

Telephone (785) 827-7281 • FAX (785) 827-8009

STRAIGHT "J" FENCE-LINE

PRECAST CONCRETE FEED BUNK

READY-MIXED CONCRETE HAYDITE AND CONCRETE PRODUCTS

- Cement
- Aggregate
- Sand Blocks
- Haydite Blocks
- Slump Blocks
- Split Blocks
- Fluted Blocks
- Patio Blocks
- Design Blocks
- Concrete Pavers
- Stepping Stones
- Splash Blocks
- Parking Curbs
- Monument Bases
- Heir Stone
- Precast Concrete
- Septic Tanks
- Fence-line Bunks
- H Type Bunks
- Concrete Rail Fence
- Concrete Privacy Fence
- Concrete Benches
- Concrete Bird Baths
- Concrete Vases

BUILDING MATERIALS

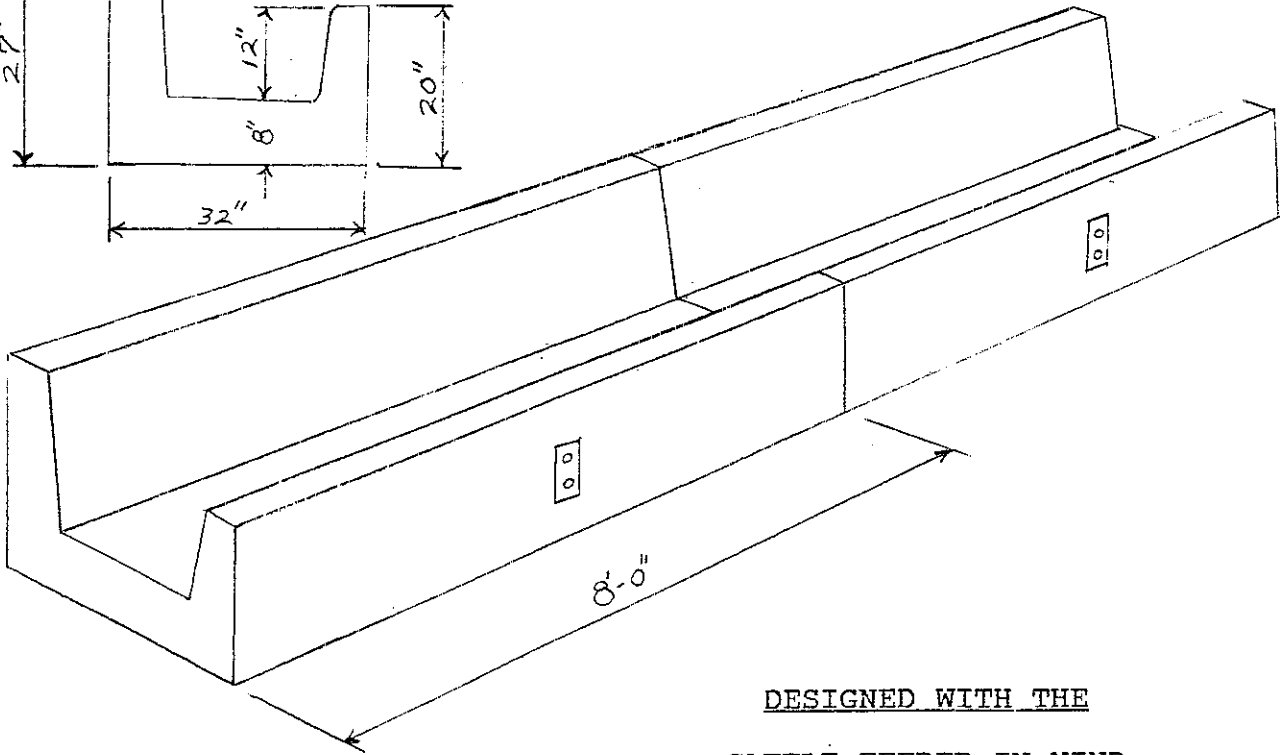
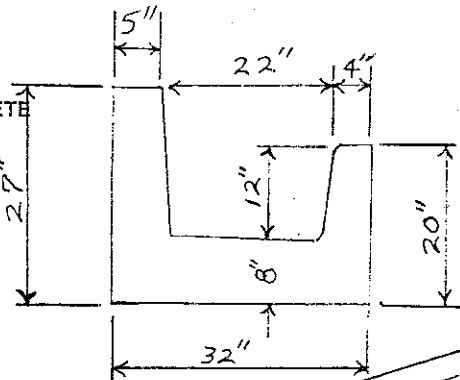
- Face Brick
- Mortar Color
- Reinforcing Steel
- Reinforcing Mesh
- Quikrete Products
- Form Hardware
- Polyethylene Film
- Expansion Joint
- Concrete Nails
- Wall Ties
- Bar Ties
- Basement Windows
- Area Vents
- Curing Compounds
- Concrete Sealers
- Porlex Perfect Paint
- Epoxy Coatings
- Thoro Waterproofings
- Block Basement Doors
- Masonry Tools
- Concrete Tools
- Sick-Mess
- Casto Steel Doors
- Casto Steel Door Frames
- Retaining Wall
- Perma Insulation

GARAGE DOORS

- Residential and Commercial
- Overhead Type Doors
- Steel, Wood Fiberglass
- Garage Door Operators

FIREPLACE PRODUCTS

- vestal Heat Circulation
- Fireplaces
- Wood-Burn Fireplaces
- Heatilator Fireplaces
- Gas Fireplaces
- Fireplace Dampers
- Fireplace Cleanout Doors
- Fireplace Glass Doors
- Chimney Caps
- Air-A-Lators



DESIGNED WITH THE

CATTLE FEEDER IN MIND

High strength reinforced concrete for durability.

Solid 8" thick floor - No rodent problems.

Round edges - Less cattle damage.

Vertical front and back walls - Cattle less able to push feed out, and feed alleys easier to clean.

Steel drilled mounting plate for welding or bolting posts to bunk.

Weights 3460 lbs. per 8' section - Cattle cannot move the bunk.

End sections available.

Delivery available - Set in place on your farm, ranch or feedlot.



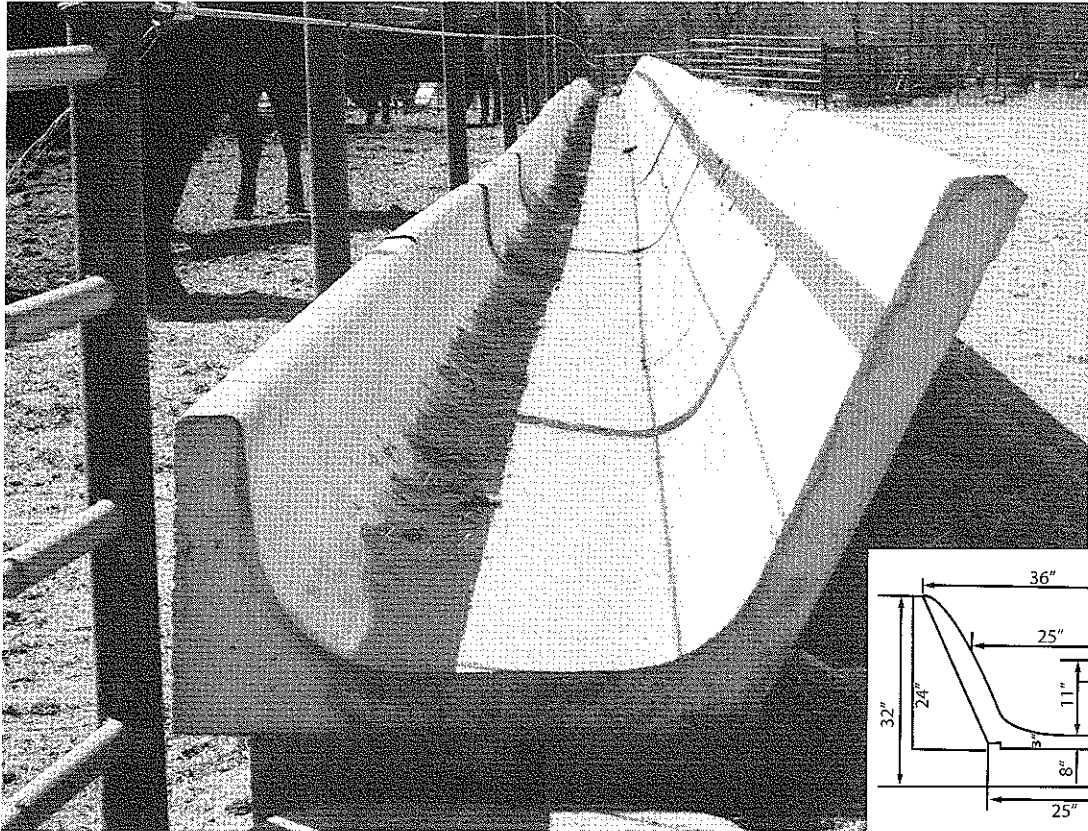
Salina Concrete

PRODUCTS

SINCE 1913

Telephone (785) 827-7281 • 888-297-9214 • FAX (785) 827-8009
1100 West Ash • P.O. Box 136 • Salina, Kansas 67401

CONSTRUCTION MATERIAL AND ACCESSORIES



READY-MIXED CONCRETE HAYDITE AND CONCRETE PRODUCTS

Cement
Aggregate
Sand Blocks
Haydite Blocks
Slump Blocks
Split Blocks
Fluted Blocks
Patio Blocks
Retaining Wall Blocks
Concrete Pavers
Stepping Stones
Splash Blocks
Parking Curbs
Monument Bases
Hewn Stone
Precast Concrete
Septic Tanks
Infiltrator Systems
Fence Line Bunks
Concrete Benches

BUILDING MATERIALS

Face Brick
Mortar Color
Reinforcing Steel
Reinforcing Mesh
Quikrete Products
Form Hardware
Polyethylene Film
Expansion Joint
Concrete Nails
Wall Ties
Bar Ties
Basement Windows
Aerawalls
Curing Compounds
Concrete Sealers
Glass Blocks
Epoxy Coatings
Thoro Waterproofings
Bilco Basement Doors
Masonry Tools
Concrete Tools
Blok-Mesh
Ceco Steel Doors
Ceco Steel Door Frames
Perlite Insulation

FIREPLACE PRODUCTS

Vestal Heat Circulation Fireplaces
Fireplaces
Fire Liners
Fire Brick
Fireplace Dampers
Fireplace Cleanout Doors
Fireplace Glass Doors
Chimney Caps
Air-A-Lators

PRECAST CONCRETE FENCE LINE FEED BUNK - LAZY J

PRECAST CONCRETE fence line feed bunks offer the following advantages over other type feed bunks:

1. Standard 8 foot lengths are stocked.
2. Smooth inside with semi-flat bottom for easy cleaning.
3. No corners to retain spoiled food.
4. High back - less waste.
5. Accurately positioned Bolt Holes allow posts to be pre-drilled for fast erection.
6. Air circulation under bunk prevents sweating and absorbing of moisture from feed lot.
7. Designed after careful study of feeding problems.
8. Sections are movable if necessary (weighing two hundred pounds per running foot).
9. Reinforcing Steel, combined with high strength concrete, produces an "extra tough" product.
10. Our volume and production facilities allow us to produce competitively a "bunk" that requires no maintenance after initial set-up.



SALINA CONCRETE PRODUCTS, INC.

FAMILY STORM SHELTER

“The *ultimate* protection for you and
your family”

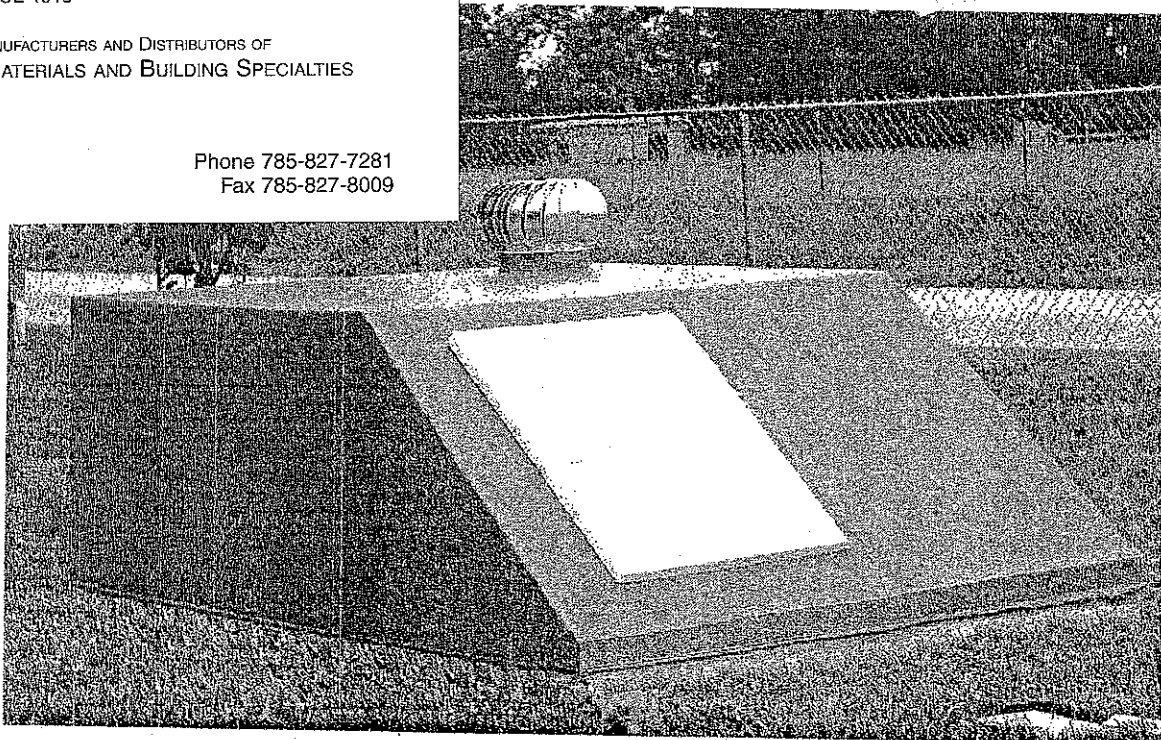
Salina Concrete
PRODUCTS

SINCE 1913

1100 West Ash
P.O. Box 136
Salina Ks 67401

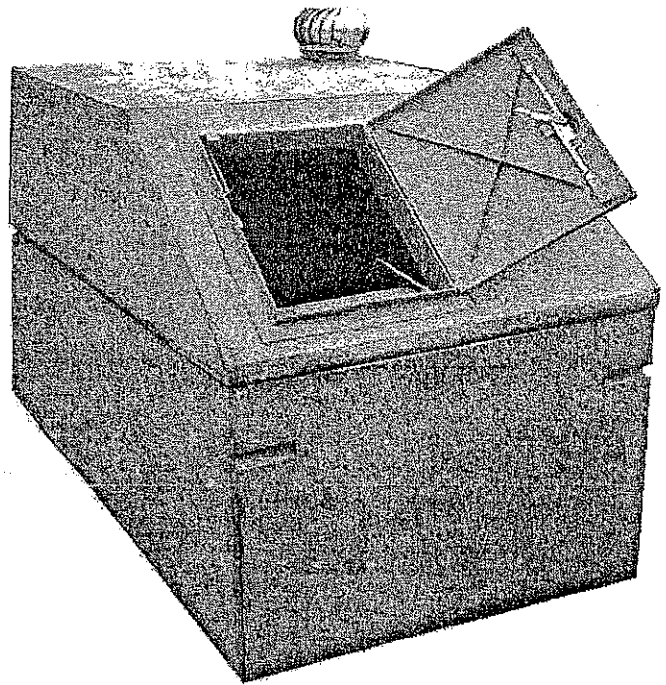
MANUFACTURERS AND DISTRIBUTORS OF
BUILDING MATERIALS AND BUILDING SPECIALTIES

Phone 785-827-7281
Fax 785-827-8009



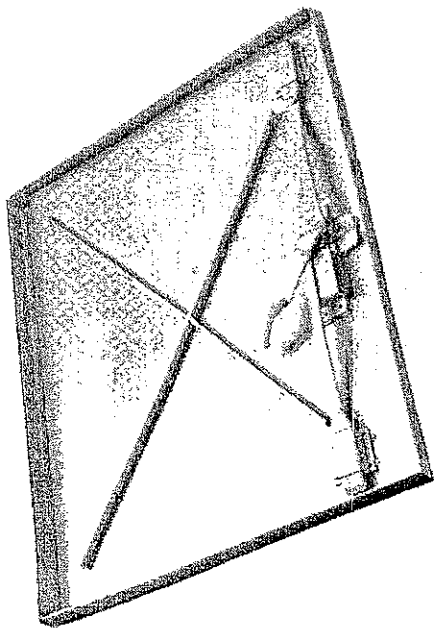
Features of our Shelters

- Meets or exceeds FEMA Standards
- Texas Tech tested
- 5000 psi concrete reinforced with 1/2 inch rebar on 12inch centers combined with 6 gauge steel wire mesh
- Powder coated steel stairs with railing
- Electrical port for wiring



Dimensions

Length- 92" inside, 101" outside
Width-65" inside, 77" outside
Height-75"inside, 85" outside
Approximate weight- 15000 lbs



Our door

- Reinforced 12 gauge steel
- Powder coated
- Custom designed 3 point latch system with locking device that allows the door to be opened from the inside, even if the door is damaged or locked